

Week 13 Meeting



11/26/18

Team Leader: Nur

Other Team Members: Katayi, Ahmed, Chufu, Tam, YJ

Advisor: Dr. Ajjarapu

Safety Moment: Parking Lot Safety

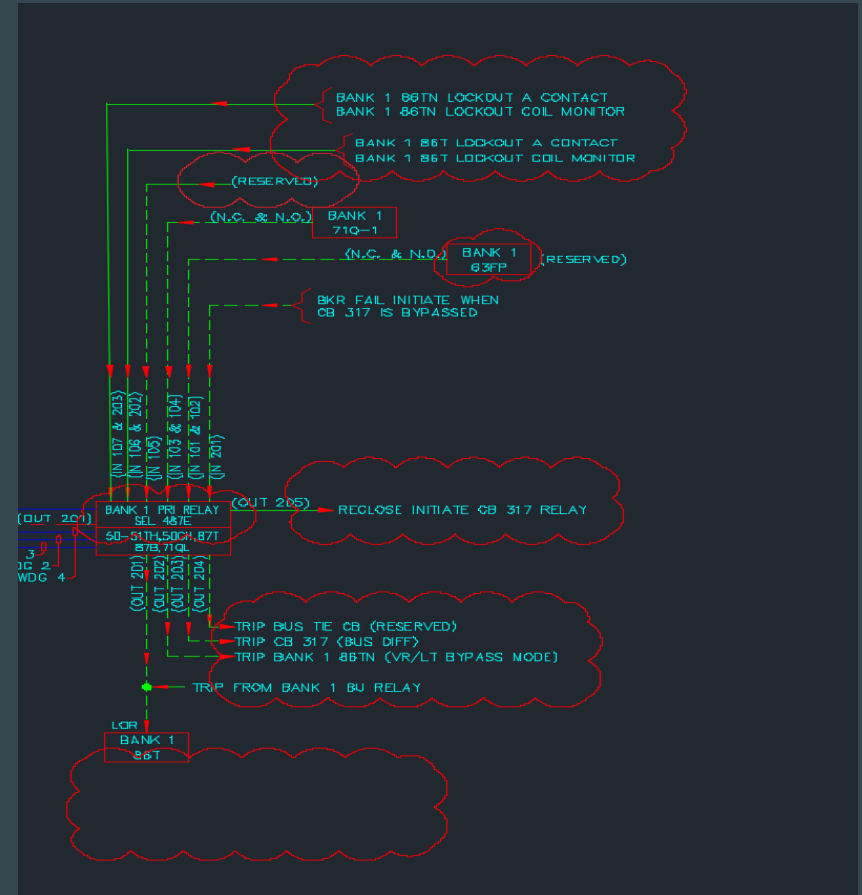
- Depending on its location, design, and the time of day, parking lots can be risky places.
 - Park near the building in a highly visible and well-lit area.
 - If you leave valuables in your car, keep them out of sight.
 - After exiting your car, don't forget to lock it.
 - When you're walking to/from your car, be alert of your surroundings. Avoid distractions like wearing headphones and texting. Trust your instincts when you feel something is not right.
 - Have your keys ready to unlock your car as you get near it. Look around and inside your car for people who may be present.

Topics

- Key Protection Diagram
- Questions

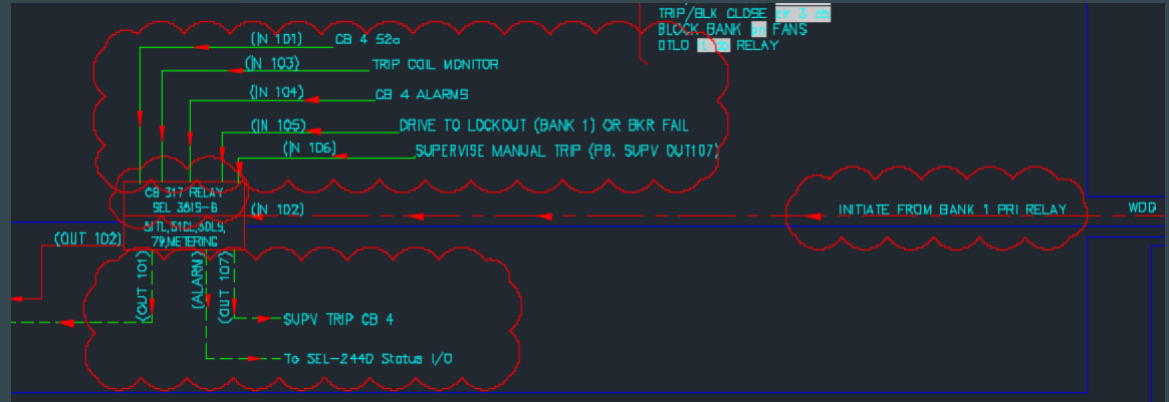
Key Protection Diagram: SEL-487E

- Deleted/added inputs and outputs according to the table in the project scope document



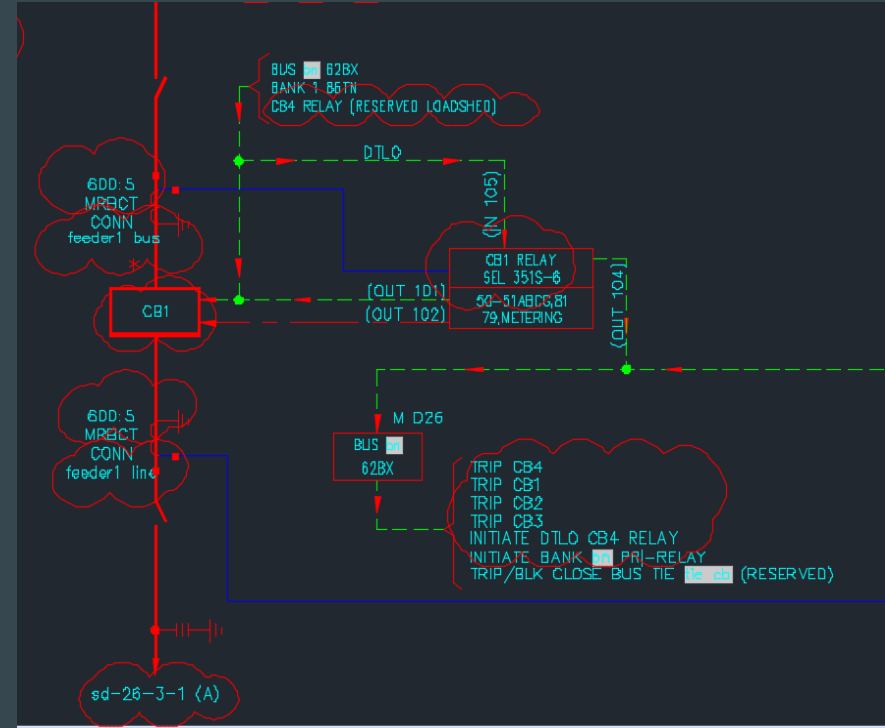
Key Protection Diagram: SEL-351S

- Deleted/added inputs and outputs according to the table in the project scope document



Key Protection Diagram: Feeders 1, 2, 3

- We can't find a table in the project scope doc with information on what the client expects to see coming in and out of the relays near the feeders.



Questions

- Looking at the project scope we couldn't determine what is SEL-2440 and SEL-2411, where they are and their connection to the key protection diagram?

